

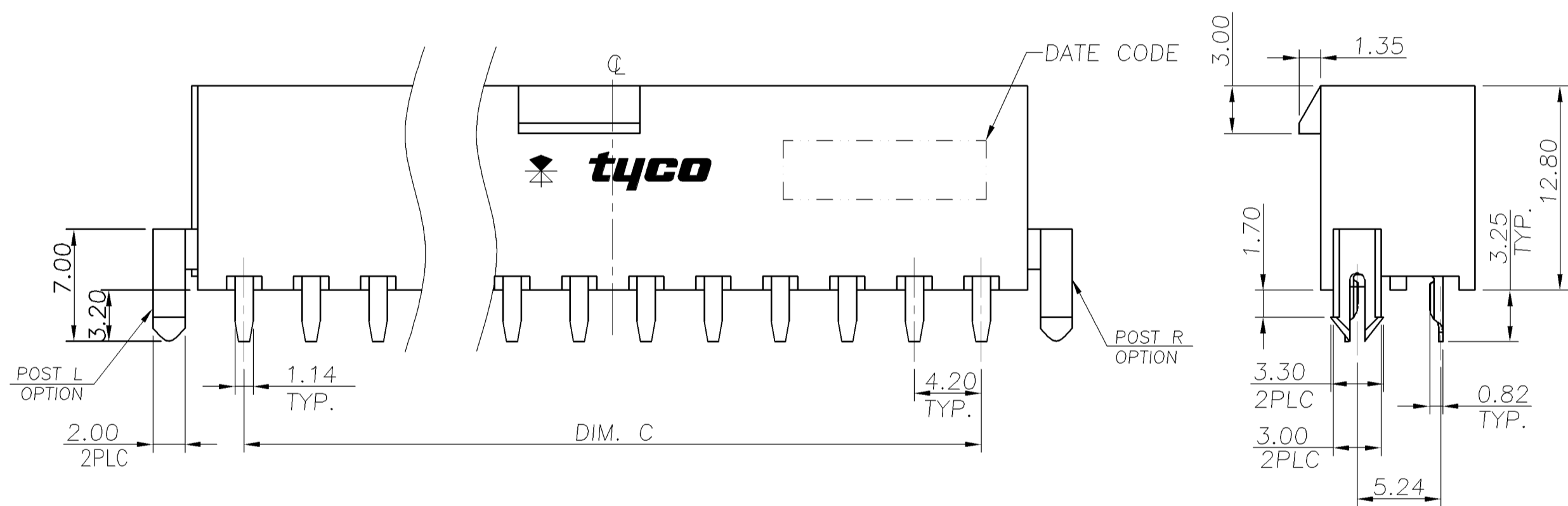
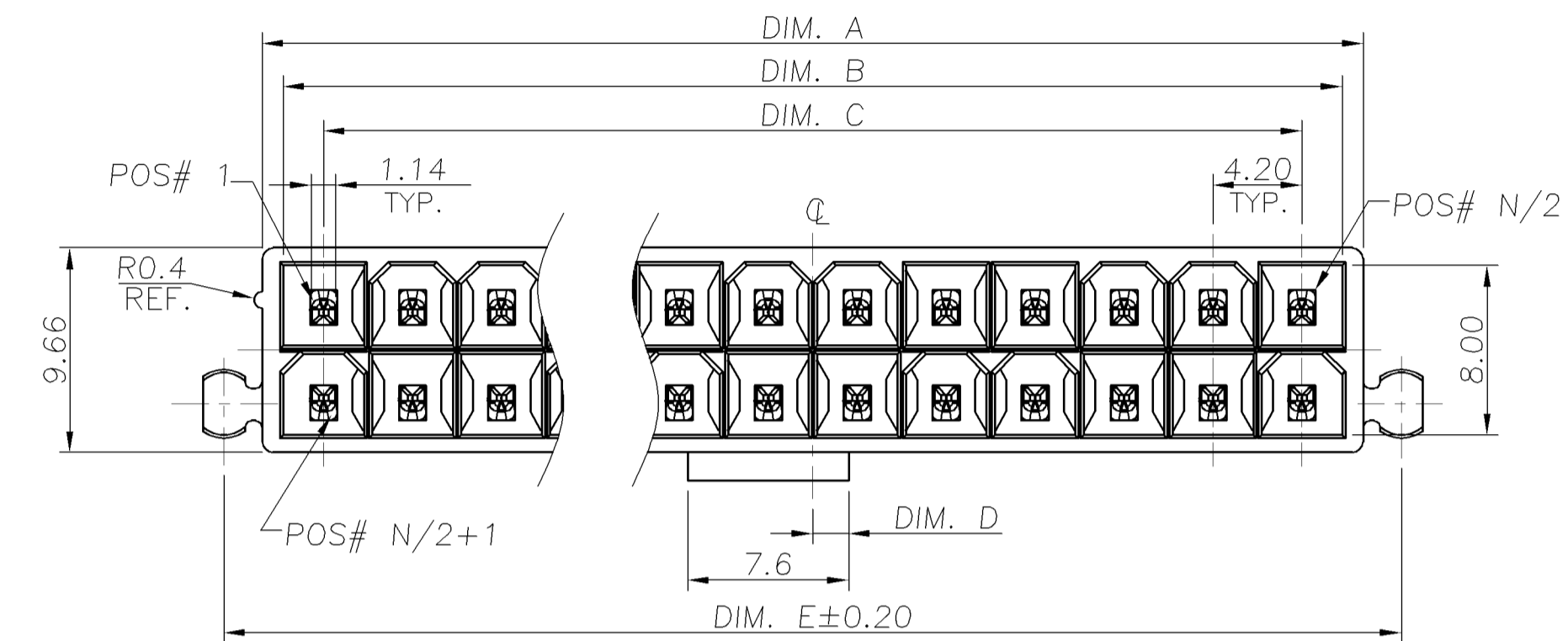
NUMBER  
C-1775034

3RD ANGLE PROJECTION

METRIC

THIS INFORMATION IS CONFIDENTIAL AND IS DISCLOSED TO YOU ON CONDITION THAT NO FURTHER DISCLOSURE IS MADE BY YOU TO OTHER THAN AMP PERSONNEL WITHOUT WRITTEN AUTHORIZATION FROM AMP (TAIWAN) LTD. DIMENSIONS IN MILLIMETERS. DO NOT SCALE PRINT.

PRINT  
DW



47.20	5.9	37.80	41.60	43.6	20P
55.60	1.7	46.20	50.00	52.0	24P
DIM. E	DIM. D	DIM. C	DIM. B	DIM. A	POS. NO.

- NOTES:
- MATERIAL:
    - HOUSING: THERMOPLASTIC, PA46, UL94V-0; COLOR: NATURAL.
    - CONTACTS: BRASS
  - FINISH:
    - CONTACT:
      - 120μ" MIN. MATTE TIN PLATING ENTIRE, 50~80μ" NICKEL UNDERPLATING OVERALL.
  - RECOMMENDED PCB THICKNESS : 1.6mm.
  - WAVE SOLDER CAPABLE TO 265°C PER TYCO SPEC. 109-202, CONDITION B.

WEIGHT :

3.83g	3.8g	3.77g	20POS.
4.65g	4.62g	4.59g	24POS.
W/POST	W/R OR L POST	W/O POST	ITEM

TRAY		W/	W/O	3-	↑	-4	20P
		W/O	W/	3-		-3	
		W/O	W/O	3-		-2	
BOX		W/	W/	3-		-1	24P
		W/O	W/O	2-		-4	
		W/O	W/	2-		-3	
TRAY	#20	W/O	W/O	2-		-2	24P
		W/	W/	2-		-1	
		W/O	W/O	1-		-5	
BOX	#20	W/O	W/O	1-		-4	24P
		W/	W/	1-		-3	
		W/O	W/O	1-		-2	
BOX	#20	W/O	W/O	1-		-1	24P
		W/	W/	1-		-4	
		W/O	W/O	1-		-3	
BOX	#20	W/O	W/O	1-		-2	24P
		W/	W/	1-		-1	
		W/O	W/O	1-		-4	
BOX	#20	W/O	W/O	1-		-3	24P
		W/	W/	1-		-2	
		W/O	W/O	1-		-1	
BOX	#20	W/O	W/O	1-		-5	24P
		W/	W/	1-		-4	
		W/O	W/O	1-		-3	
BOX	#20	W/O	W/O	1-		-2	24P
		W/	W/	1-		-1	
		W/O	W/O	1-		-4	
BOX	#20	W/O	W/O	1-		-3	24P
		W/	W/	1-		-2	
		W/O	W/O	1-		-1	
BOX	#20	W/O	W/O	1-		-4	24P
		W/	W/	1-		-3	
		W/O	W/O	1-		-2	
BOX	#20	W/O	W/O	1-		-1	24P
		W/	W/	1-		-4	
		W/O	W/O	1-		-3	
BOX	#20	W/O	W/O	1-		-2	24P
		W/	W/	1-		-1	
		W/O	W/O	1-		-4	
BOX	#20	W/O	W/O	1-		-3	24P
		W/	W/	1-		-2	
		W/O	W/O	1-		-1	
BOX	#20	W/O	W/O	1-		-4	24P
		W/	W/	1-		-3	
		W/O	W/O	1-		-2	
BOX	#20	W/O	W/O	1-		-1	24P
		W/	W/	1-		-4	
		W/O	W/O	1-		-3	
BOX	#20	W/O	W/O	1-		-2	24P
		W/	W/	1-		-1	
		W/O	W/O	1-		-4	
BOX	#20	W/O	W/O	1-		-3	24P
		W/	W/	1-		-2	
		W/O	W/O	1-		-1	
BOX	#20	W/O	W/O	1-		-4	24P
		W/	W/	1-		-3	
		W/O	W/O	1-		-2	
BOX	#20	W/O	W/O	1-		-1	24P
		W/	W/	1-		-4	
		W/O	W/O	1-		-3	
BOX	#20	W/O	W/O	1-		-2	24P
		W/	W/	1-		-1	
		W/O	W/O	1-		-4	
BOX	#20	W/O	W/O	1-		-3	24P
		W/	W/	1-		-2	
		W/O	W/O	1-		-1	
BOX	#20	W/O	W/O	1-		-4	24P
		W/	W/	1-		-3	
		W/O	W/O	1-		-2	
BOX	#20	W/O	W/O	1-		-1	24P
		W/	W/	1-		-4	
		W/O	W/O	1-		-3	
BOX	#20	W/O	W/O	1-		-2	24P
		W/	W/	1-		-1	
		W/O	W/O	1-		-4	
BOX	#20	W/O	W/O	1-		-3	24P
		W/	W/	1-		-2	
		W/O	W/O	1-		-1	
BOX	#20	W/O	W/O	1-		-4	24P
		W/	W/	1-		-3	
		W/O	W/O	1-		-2	
BOX	#20	W/O	W/O	1-		-1	24P
		W/	W/	1-		-4	
		W/O	W/O	1-		-3	
BOX	#20	W/O	W/O	1-		-2	24P
		W/	W/	1-		-1	
		W/O	W/O	1-		-4	
BOX	#20	W/O	W/O	1-		-3	24P
		W/	W/	1-		-2	
		W/O	W/O	1-		-1	
BOX	#20	W/O	W/O	1-		-4	24P
		W/	W/	1-		-3	
		W/O	W/O	1-		-2	
BOX	#20	W/O	W/O	1-		-1	24P
		W/	W/	1-		-4	
		W/O	W/O	1-		-3	
BOX	#20	W/O	W/O	1-		-2	24P
		W/	W/	1-		-1	
		W/O	W/O	1-		-4	
BOX	#20	W/O	W/O	1-		-3	24P
		W/	W/	1-		-2	
		W/O	W/O	1-		-1	
BOX	#20	W/O	W/O	1-		-4	24P
		W/	W/	1-		-3	
		W/O	W/O	1-		-2	
BOX	#20	W/O	W/O	1-		-1	24P
		W/	W/	1-		-4	
		W/O	W/O	1-		-3	
BOX	#20	W/O	W/O	1-		-2	24P
		W/	W/	1-		-1	
		W/O	W/O	1-		-4	
BOX	#20	W/O	W/O	1-		-3	24P
		W/	W/	1-		-2	
		W/O	W/O	1-		-1	
BOX	#20	W/O	W/O	1-		-4	24P
		W/	W/	1-		-3	
		W/O	W/O	1-		-2	
BOX	#20	W/O	W/O	1-		-1	24P
		W/	W/	1-		-4	
		W/O	W/O	1-		-3	
BOX	#20	W/O	W/O	1-		-2	24P
		W/	W/	1-		-1	
		W/O	W/O	1-		-4	
BOX	#20	W/O	W/O	1-		-3	24P
		W/	W/	1-		-2	
		W/O	W/O	1-		-1	
BOX	#20	W/O	W/O	1-		-4	24P
		W/	W/	1-		-3	
		W/O	W/O	1-		-2	
BOX	#20	W/O	W/O	1-		-1	24P
		W/	W/	1-		-4	
		W/O	W/O	1-		-3	
BOX	#20	W/O	W/O	1-		-2	24P
		W/	W/	1-		-1	
		W/O	W/O	1-		-4	
BOX	#20	W/O	W/O	1-		-3	24P
		W/	W/	1-		-2	
		W/O	W/O	1-		-1	
BOX	#20	W/O	W/O	1-		-4	24P
		W/	W/	1-		-3	
		W/O	W/O	1-		-2	
BOX	#20	W/O	W/O	1-		-1	24P
		W/	W/	1-		-4	
		W/O	W/O	1-		-3	
BOX	#20	W/O	W/O	1-		-2	24P
		W/	W/	1-		-1	
		W/O	W/O	1-		-4	
BOX	#20	W/O	W/O	1-		-3	24P
		W/	W/	1-		-2	
		W/O	W/O	1-		-1	
BOX	#20	W/O	W/O	1-		-4	24P
		W/	W/	1-		-3	
		W/O	W/O	1-		-2	
BOX	#20	W/O	W/O	1-		-1	24P
		W/	W/	1-		-4	
		W/O	W/O	1-		-3	
BOX	#20	W/O	W/O	1-		-2	24P
		W/	W/	1-		-1	
		W/O	W/O	1-		-4	
BOX	#20	W/O	W/O	1-		-3	24P
		W/	W/	1-		-2	
		W/O	W/O	1-		-1	
BOX	#20	W/O	W/O	1-		-4	24P
		W/	W/	1-		-3	
		W/O	W/O	1-		-2	
BOX	#20	W/O	W/O	1-		-1	24P
		W/	W/	1-		-4	
		W/O	W/O	1-		-3	
BOX	#20	W/O	W/O	1-		-2	24P
		W/	W/	1-		-1	
		W/O	W/O	1-		-4	
BOX	#20	W/O	W/O	1-		-3	24P
		W/	W/	1-		-2	
		W/O	W/O	1-		-1	
BOX	#20	W/O	W/O	1-		-4	24P
		W/	W/	1-		-3	
		W/O	W/O	1-		-2	
BOX	#20	W/O	W/O	1-		-1	24P
		W/	W/	1-		-4	
		W/O	W/O	1-		-3	
BOX	#20	W/O	W/O	1-		-2	24P
		W/	W/	1-		-1	
		W/O	W/O	1-		-4	
BOX	#20	W/O	W/O	1-		-3	24P
		W/	W/	1-		-2	
		W/O	W/O	1-		-1	
BOX	#20	W/O	W/O	1-		-4	24P
		W/	W/	1-		-3	
		W/O	W/O	1-		-2	
BOX	#20	W/O	W/O	1-		-1	24P
		W/	W/	1-		-4	
		W/O	W/O	1-		-3	
BOX	#20	W/O	W/O	1-		-2	24P
		W/	W/	1-		-1	
		W/O	W/O	1-		-4	
BOX	#20	W/O	W/O	1-		-3	24P
		W/	W/	1-		-2	
		W/O	W/O	1-		-1	
BOX	#20	W/O	W/O	1-		-4	24P
		W/	W/	1-		-3	
		W/O	W/O	1-		-2	
BOX	#20	W/O	W/O	1-		-1	24P
		W/	W/	1-		-4	
		W/O	W/O	1-		-3	
BOX	#20	W/O	W/O	1-		-2	24P
		W/	W/	1-		-1	
		W/O	W/O	1-		-4	
BOX	#20	W/O	W/O	1-		-3	24P
		W/	W/	1-		-2	
		W/O	W/O	1-			

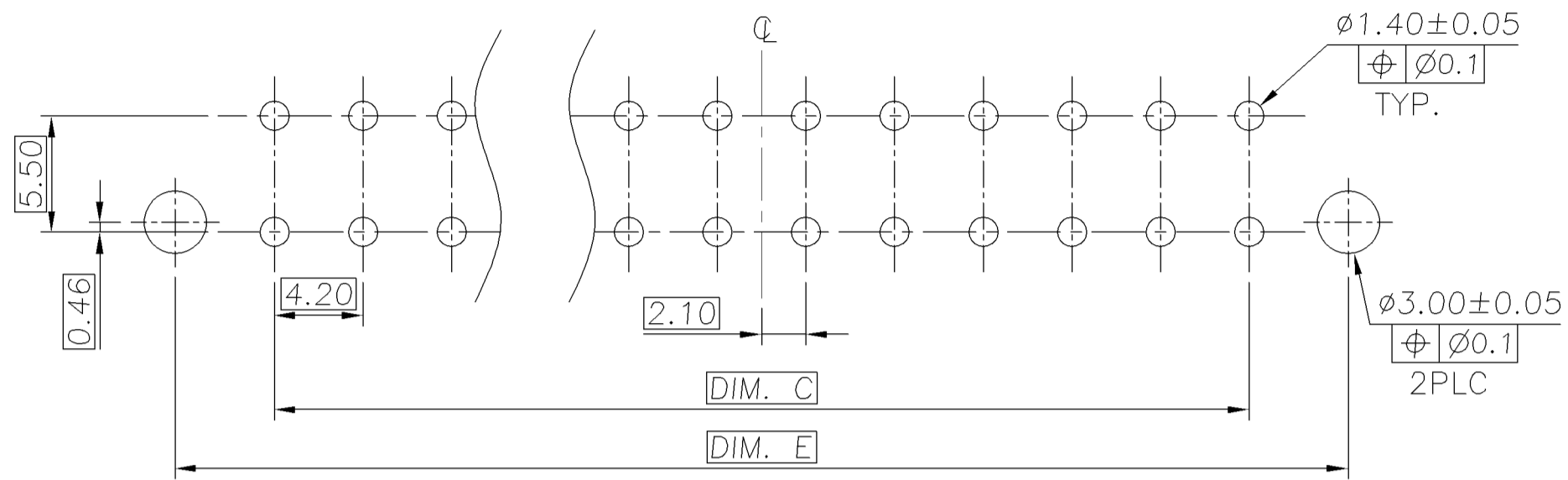
NUMBER  
C-1775034

3RD ANGLE PROJECTION

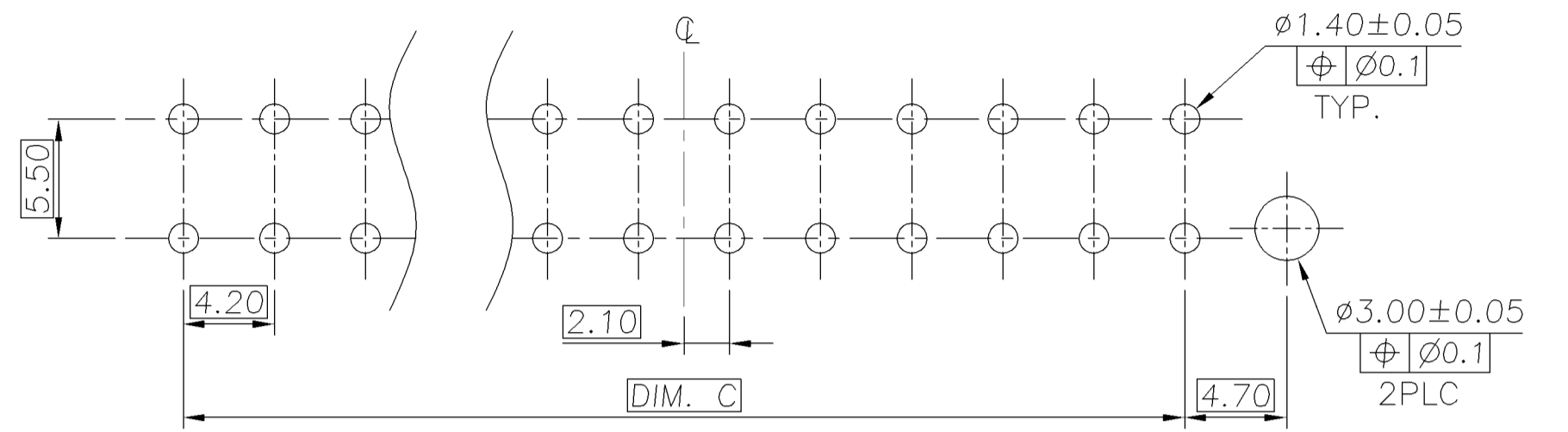
METRIC

THIS INFORMATION IS CONFIDENTIAL AND IS DISCLOSED TO YOU ON CONDITION THAT NO FURTHER DISCLOSURE IS MADE BY YOU TO OTHER THAN AMP PERSONNEL WITHOUT WRITTEN AUTHORIZATION FROM AMP (TAIWAN) LTD. DIMENSIONS IN MILLIMETERS. DO NOT SCALE PRINT.

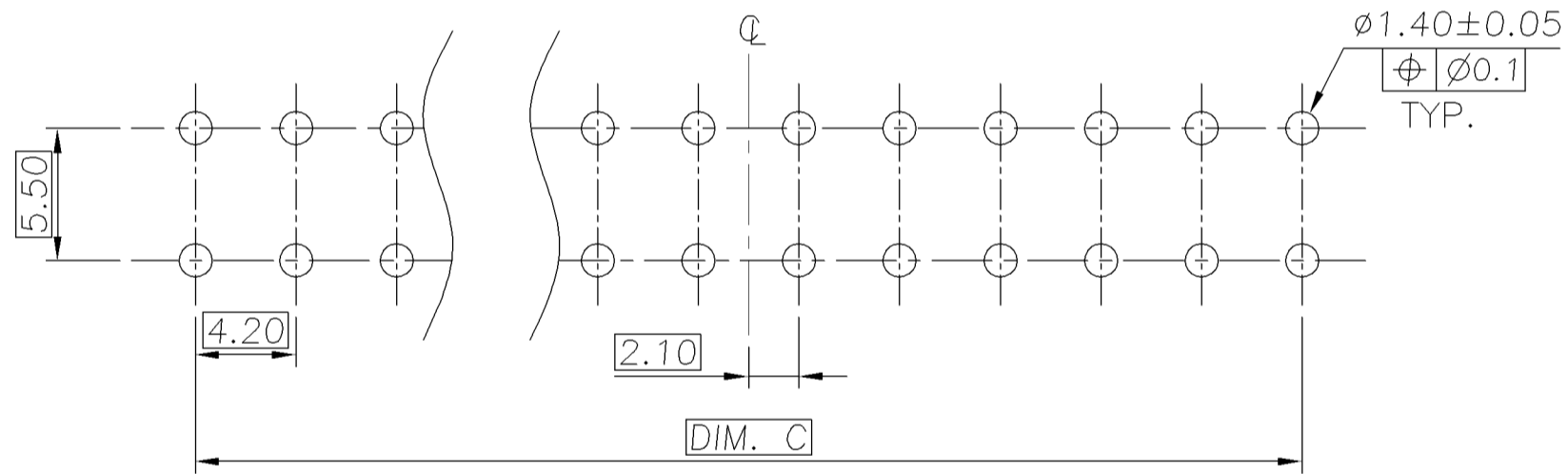
PRINT DIST  
DW



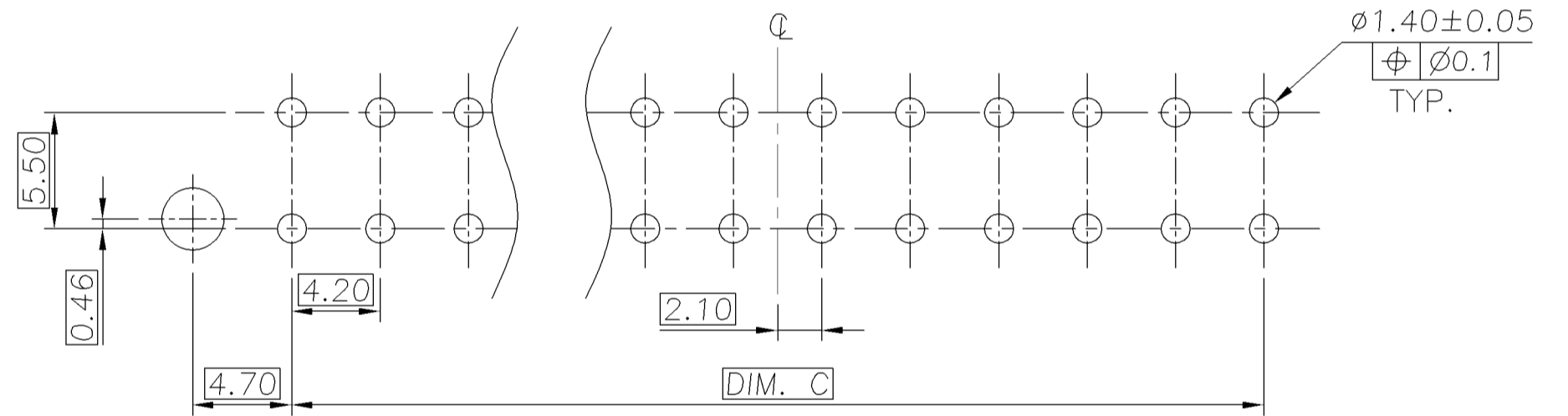
RECOMMENDED PCB LAYOUT  
FOR P/N: X-1775034-1



RECOMMENDED PCB LAYOUT  
FOR P/N: X-1775034-3



RECOMMENDED PCB LAYOUT  
FOR P/N: X-1775034-2



RECOMMENDED PCB LAYOUT  
FOR P/N: X-1775034-4

SEE SHEET 1	ECN	DWN	DATE
LTR	REVISION RECORD	CHK	

TOLERANCES UNLESS OTHERWISE SPECIFIED: 0 PLC ± 1 PLC ± 2 PLC ± 3 PLC ± ANGLES ±	DWN	S. HOU 24-NOV-2006	 TYCO HOLDINGS (BERMUDA) VII LTD. TAIWAN BRANCH		
	CHK	W.J. KE 24-NOV-2006			
MATERIAL	APVD	W.J. KE 24-NOV-2006	NAME  ATX POWER CONN., V/T, PLUG, 4.2 PITCH, DIP TYPE		
	PRODUCT SPEC				
FINISH	QUALIFICATION TEST REPORT	LOC	SIZE	DRAWING NO	REV
	WEIGHT	DW	A <sub>3</sub>	C-1775034	C
		SCALE	SHEET		
		--	2 OF 4		

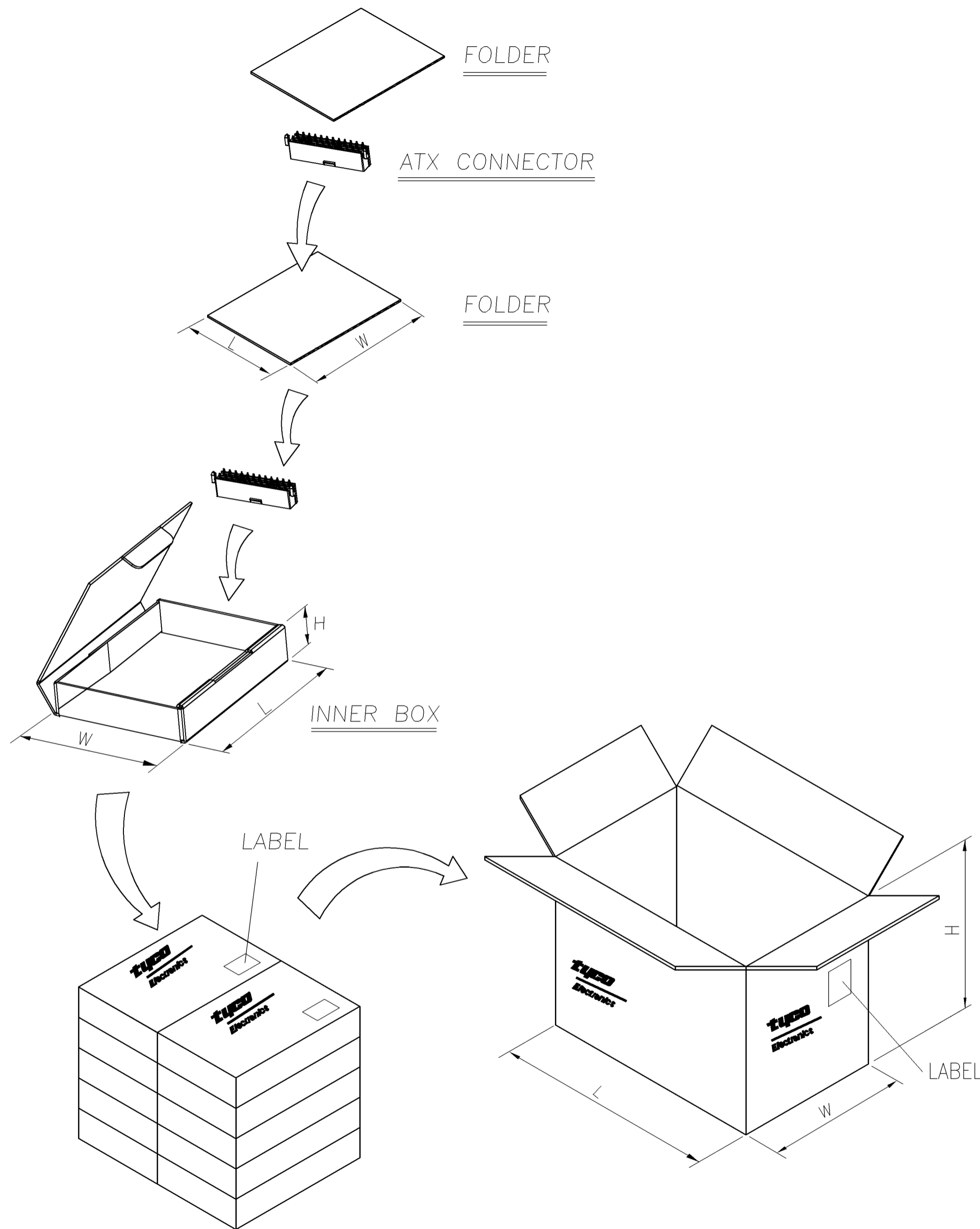
NUMBER  
C-1775034

3RD ANGLE PROJECTION

METRIC

THIS INFORMATION IS CONFIDENTIAL AND IS DISCLOSED TO YOU ON CONDITION THAT NO FURTHER DISCLOSURE IS MADE BY YOU TO OTHER THAN AMP PERSONNEL WITHOUT WRITTEN AUTHORIZATION FROM AMP (TAIWAN) LTD. DIMENSIONS IN MILLIMETERS. DO NOT SCALE PRINT.

PRINT DIST  
DW



NOTE :

1. MATERIAL :
  - 1.1 INNER BOX: SINGLE CORRAGUATE
  - 1.2 SHIPPING CARTON : CORRUGATED FIBERBOARD
  - 1.3 FOLDER : SINGLE CORRUGATED
2. DIMENSION :  
SEE TABLE
3. QUANTITY :
  - 3.1 PRIMARY PACKING: 120 PCS/INNER BOX(24P)  
150 PCS/INNER BOX(20P)
  - 3.2 SECONDARY PACKING: 10 INNER BOX/CARTON(1200PCS)  
10 INNER BOX/CARTON(1500PCS)

ATX 20POSITION CONNECTOR				WEIGHT	DIMENSION
7.37Kg	7.32Kg	7.27Kg	G.W./CARTON		
5.75Kg	5.70Kg	5.65Kg	N.W./CARTON		
L=365,W=264,H=248	L=365,W=250,H=248	L=365,W=247,H=248	CARTON	INNER BOX	
L=250,W=171,H=42	L=236,W=171,H=42	L=224,W=171,H=42	INNER BOX		
L=247,W=166,T=3	L=233,W=166,T=3	L=215,W=166,T=3	FOLDER		
W/POST	W/R OR W/L POST	W/O POST	ITEM		
ATX 24POSITION CONNECTOR				WEIGHT	DIMENSION
7.2Kg	7.17Kg	7.14Kg	G.W./CARTON		
5.58Kg	5.55Kg	5.52Kg	N.W./CARTON		
L=365,W=248,H=248	L=365,W=237,H=248	L=365,W=230,H=248	CARTON	INNER BOX	
L=230,W=171,H=40	L=222,W=171,H=40	L=216,W=171,H=40	INNER BOX		
L=222,W=166,T=3	L=215,W=166,T=3	L=208,W=166,T=3	FOLDER		
W/POST	W/R OR W/L POST	W/O POST	ITEM		
TOLERANCES UNLESS OTHERWISE SPECIFIED:		DWN	S. HOU	<b>tyco</b> TYCO HOLDINGS (BERMUDA) <b>Electronics</b> VII LTD. TAIWAN BRANCH	
0 PLC ±		CHK	24-NOV-2006		
1 PLC ±			W.J. KE	NAME ATX POWER CONN., V/T, PLUG, 4.2 PITCH, DIP TYPE	
2 PLC ±			24-NOV-2006		
3 PLC ±			APVD	LOC SIZE DRAWING NO REV DW A <sub>3</sub> C-1775034 C	
ANGLES ±			24-NOV-2006		
MATERIAL	SEE NOTE		QUALIFICATION TEST REPOERT	SCALE SHEET -- 3 OF 4	
FINISH	SEE NOTE		WEIGHT		

SEE SHEET 1				
LTR	REVISION RECORD	ECN	DWN CHK	DATE

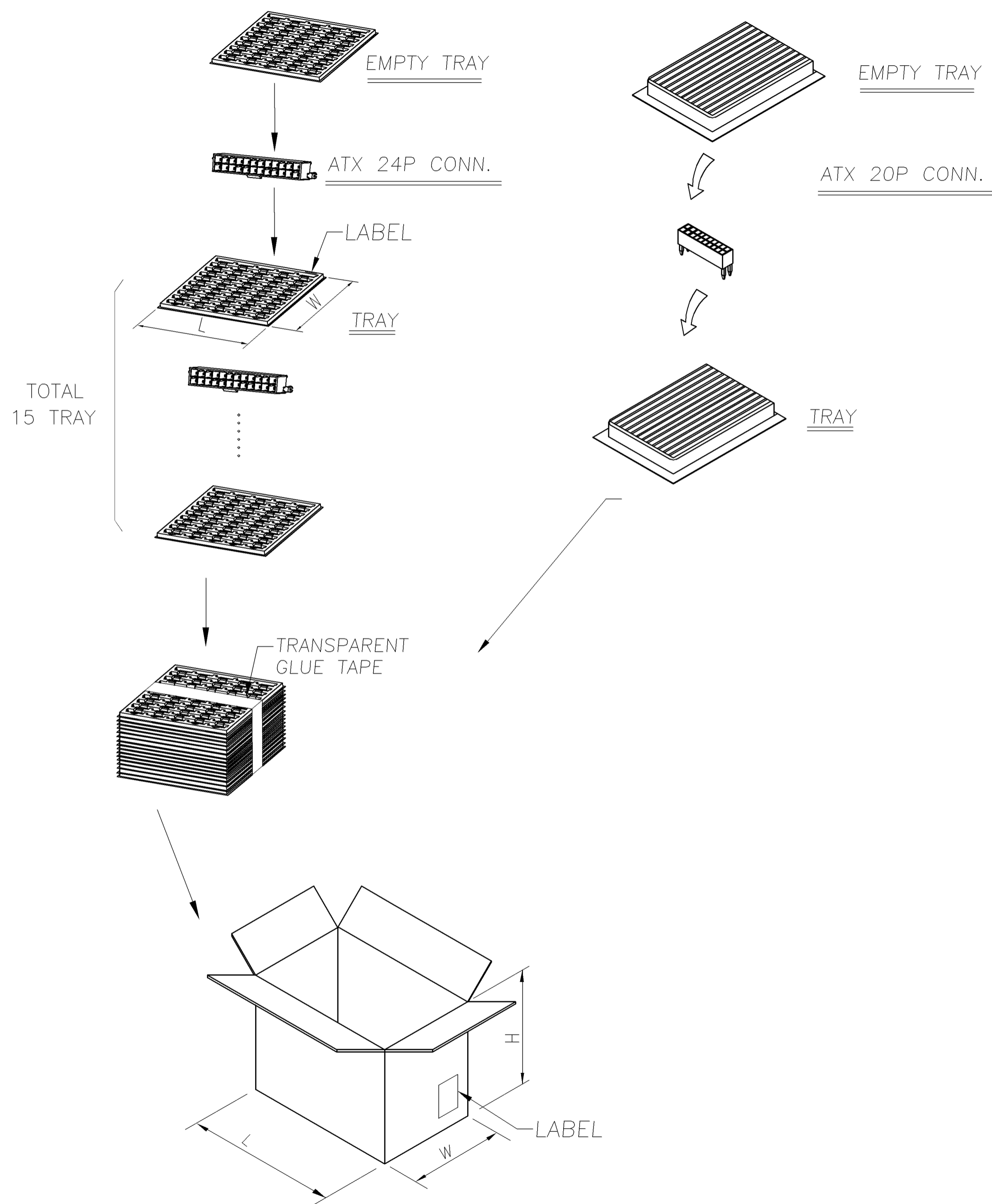
NUMBER  
C-1775034

3RD ANGLE PROJECTION

METRIC

THIS INFORMATION IS CONFIDENTIAL AND IS DISCLOSED TO YOU ON CONDITION THAT NO FURTHER DISCLOSURE IS MADE BY YOU TO OTHER THAN AMP PERSONNEL WITHOUT WRITTEN AUTHORIZATION FROM AMP (TAIWAN) LTD. DIMENSIONS IN MILLIMETERS. DO NOT SCALE PRINT.

PRINT  
DW



- NOTE :
- MATERIAL :
    - TRAY : PS
    - SHIPPING CARTON : CORRUGATED FIBERBOARD
  - DIMENSION :
    - TRAY : L=350, W=326, H=14(24P)  
L=344, W=259.5, H=21(20P)
    - SHIPPING CARTON : L=355, W=331, H=197(24P)  
L=360, W=280, H=250(20P)
  - QUANTITY : SEE NOTE
  - WEIGHT : SEE NOTE

ATX 20POSITION CONNECTOR				
5.26Kg	5.23Kg	5.67Kg	G.W./CARTON	WEIGHT
2.76Kg	2.73Kg	3.17Kg	N.W./CARTON	WEIGHT
10 TRAYS (720PCS)	10 TRAYS (720PCS)	10 TRAYS (840PCS)	TRAYS/CARTON	QUANTITY
72PCS	72PCS	84PCS	PCS/TRAY	QUANTITY
W/POST	W/R OR W/L POST	W/O POST	ITEM	QUANTITY
ATX 24POSITION CONNECTOR				
5.5Kg	5.48Kg	5.46Kg	G.W./CARTON	WEIGHT
3.49Kg	3.47Kg	3.45Kg	N.W./CARTON	WEIGHT
15 TRAYS (750PCS)	15 TRAYS (750PCS)	15 TRAYS (750PCS)	TRAYS/CARTON	QUANTITY
50PCS	50PCS	50PCS	PCS/TRAY	QUANTITY
W/POST	W/R OR W/L POST	W/O POST	ITEM	QUANTITY
TOLERANCES UNLESS OTHERWISE SPECIFIED:		DWN	S. HOU	<b>tyco</b> TYCO HOLDINGS (BERMUDA) VII LTD. TAIWAN BRANCH
0 PLC ±		CHK	W.J. KE	
1 PLC ±			24-NOV-2006	NAME ATX POWER CONN., V/T, PLUG, 4.2 PITCH, DIP TYPE
2 PLC ±			24-NOV-2006	
3 PLC ±				MATERIAL SEE NOTE
ANGLES ±				
MATERIAL		APVD	W.J. KE	FINISH SEE NOTE
SEE NOTE		PRODUCT SPEC	24-NOV-2006	
FINISH		QUALIFICATION TEST REPOERT	LOC	SIZE
SEE NOTE		WEIGHT	DW	A <sub>3</sub>
			DRAWING NO	REV
			C-1775034	C
			SCALE	SHEET
			--	4 OF 4

SEE SHEET 1			
LTR	REVISION RECORD	ECN	DWN/CHK/DATE